

Roof Kit Installation Guide

The Figaro Shop Ltd

01235 812511

Remove the rear trim from around the back window frame, it has clips which can be prised off, they are fragile so be careful.



Remove the 6 dome head bolts which hold the hoods rear beam in place.



Now remove the old hood, be careful not to damage the inner liner.

Cut around the front edge of the hood.



Then along the beams.
Avoid the inner liner.





The top of the roof will now come fully away.

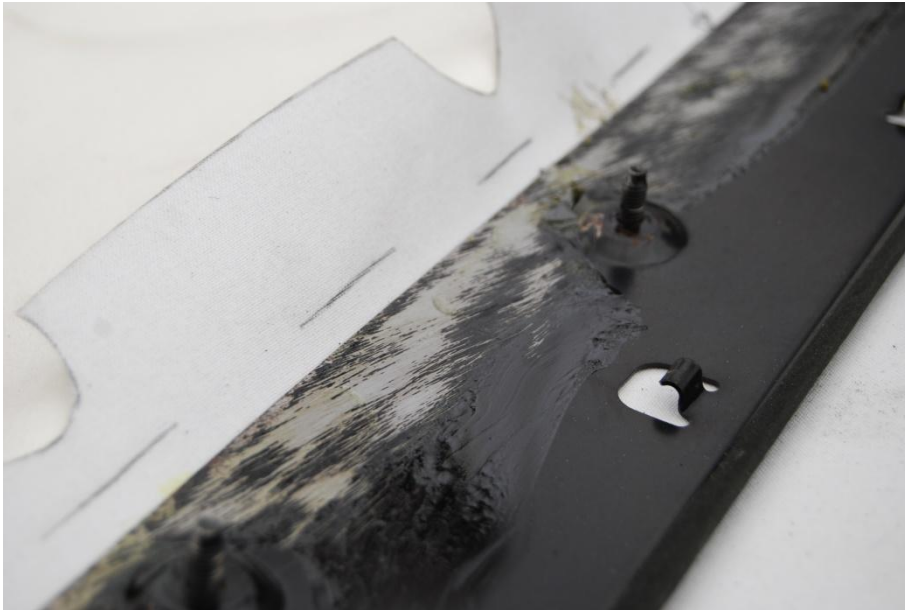
You then need to cut the pop rivets from the rear beam, allowing the wire which runs down both edges to come away, at this stage the wire is joined only at the front.



Then thread the wire down the edge of the new hood, you will need something to tape the wire to, this will enable you to push it down the hole, once through, pop rivet it back in place. Be aware that the hood is the right way round.



The straight edge is at the front.



Now clean the old glue from the rear beam.
Apply a thin layer of contact adhesive to
both the hood and the rear beam, and
then, once dried stick down.





Following this bolt the rear beam back in place.

Do the same with the front edge. You can use the elongated holes on the rear frame to adjust the tension

Whilst the rear frame is out it can be re-trimmed, the window can be carefully prised out. The frame then needs to be fully cleaned of all old glues. Use a spray contact adhesive on the vinyl and frame and then lay down the entire sheet. Following this cut out the window hole and trim the edges and bolt holes with a sharp blade. Then replace the boot rubber, glass and finishing strips which sit on the inside edge.

